



Staff Christmas Party 2015

**Wishing you all a
PEACEFUL HAPPY NEW YEAR
for 2016**



No rest for some of the wicked!





Dear Friends and Families

It has been a big year for us all, but now it is time to turn our thoughts to the New Year, time in the sun with family and friends, and pondering how to make the most of 2016. From everyone at Ranfurly Care, we wish you a very happy New Year filled with laughter and sunshine. We will look forward to catching up with you in the New Year. I hope you enjoy the pictures as much as I did while I was reflecting and remembering the busy year of 2015 which has silently slipped by. I could have added hundreds more!

There is an excellent quote by Edith Lovejoy Pierce; "We will open the book, its pages are blank, we are going to put words on them ourselves. The book is called 'Opportunity' and its first chapter is New Year's Day."

2015 ended with Clive's innovative end-of-year Nativity play, 'Kiwi Christmas' by Joy Cowley. Clive and the team took a successful modern approach to the traditional Nativity.

The year 2015 has been a satisfying and rewarding year for the Society. This was reflected in the recent successful audit that involved interviews with families, residents, students and staff. This shows that we achieve and maintain exceptionally high standards of professionalism, care and support which is what we strive to deliver resulting in a measured benchmark of success. Many, many thanks to our resourceful, creative and cooperative staff – as I explain to them, the Residents and Students are their employers and our service can only ever be as good as our staff.

The Annual Manager's Report was an update on what we have achieved prior to the AGM on 29 October 2015. We realised by the low attendance at the meeting that service users who were not financial members were not being sent the Executive Chairmans and Managers Annual Reports. Therefore copies have now been sent and again we encourage everyone to become participating members. Clive gave a talk founded on the principles that the Ranfurly Activity Centre are implementing to fulfil the person-centered philosophy of Enabling Good Lives. Rhonda has been excellent in helping all staff and services with Lifestyle Plans which are the foundation for the Ministry of Health and Ministry of Social



Development's new contractual outcome reports. We are very pleased that the U.K. Social Worker and staff member Jo Gallagher has finally received her New Zealand residency and is very happy to be back and working with us. We are planning for Jo in her capacity as Social Worker to attend each Lifestyle Plan Meeting to really get to know all the families we provide services to.

There is another aspect of the Enabling Good Lives that we have been working on. Clive and I supported Hannah Kift, the Activity Centre staff member on her Auckland University practicum at Ranfurly. The pilot project has involved talking to the client group on a one- to-one basis around their personal expectations, decision making, community participation, and their thoughts and feelings about issues important to them. One initiative was to develop forms to map the individual's connections, supports and community participation. Hannah then met with seven residents which involved a very individualised approach to communicating and interviewing each resident. Hannah has been an Ozzie Diamond.

Ranfurly's new project and exciting expansion plans is to create five self contained units in what will be known as the 'Mews project'. Sullivan Hall Consulting Engineers have completed the concept stage drawings resulting in each unit being a compact 32 square metres approximately. This will involve redeveloping the two garages, the Special Olympics Office, the Community Constables office and the Craft Room at 52 Ranfurly Road. Now comes the long wait for the Auckland City Council resource consent applications, etc.

Ray Peers and his son have now completed the repainting of the Ranfurly home building which is a credit to them both. We are all very pleased with the new colours which blend well with the park and surrounding trees. During the New Year break he is working through the big task of painting the Activity Centre Hall building and all window frames which require a lot of preparation time. To continue to maintain a high standard, 2015 has again been another year of repairs and maintenance which included replacing a large portion of the Ranfurly road home carpet. 2016 will be the same!

We have a wonderful new staff member Juanita Latte who is working in the home. April Aragon has returned to the Philippines as her mother is very ill – she is planning to be back at the end of March. Jill Taylor will be away until at least mid January. Iris Williams started back in October but will be away again for most of February as she requires yet another operation on her wrist. Mike is waiting for a disc operation and will not be back until April. Hannah Kim has left and is overjoyed to be expecting her first child. Jessie who previously helped in a special needs school is employed for 15 hours a week. Everyone will miss Patrice, our physiotherapist and trainer, who is leaving Auckland to move to Tauranga. He has introduced Bhakti, a trained osteopath, who will take his place with gym and exercise work.

Those of you who know Chitra Subramanian will be interested to learn that she is now the Quality Assurance Leader at Taikura Trust! I am sure she will help anyone who experiences communication problems.

We send our condolences to student Mark McCormick for the loss of his mother on 1st November after a long illness and to Vincent Mohadoss and his mother Sheila for the sudden loss of their Father and husband who passed away unexpectedly on the 16 November. Many of us attended both funeral services.

The Activity Centre starts back on the 25 January while I will be away on holiday. A big 'Welcome Back' to all the students – I can visualise some sighs of relief. The residents have enjoyed family time over Christmas and are now taking it easy with lots of outings and time with their friends. One loves coming to work as the daily reception is amazing, it truly is a family.

Best wishes to you all from *Linda Nelson (Manager)*



Clives Christmas nativity based on a New Zealand story



A selection of photos taken on the day





PURE JOY — Sacha and Hannah meeting a friend at the Robin Hood Production







Summer Strawberry Picking at



The Robin Hood Production by Brett Ihaka



February 2015 we were all entertained by the drama group play Robin Hood and his







Robin Hood Play—a photo selection



MARCH 2015 The performers dressed and ready to perform at the Pump House Theatre Takapuna



**AUCKLAND MULTICULTURAL
SOCIETY INC**

Multi Cultural dance festival
Ranfurly Performance
at the Pump House
Takapuna March 2015





EPSOM ANZAC SERVICE

11am Saturday April 25th 2015
at Marivare Reserve
Corner Manukau and Ranfurly Roads Epsom



WE WILL REMEMBER THEM



.....A generous donor





7 March 2015 Julie accompanied some residents to the APO Fiesta Latina concert held in the grounds of Government House

Tina really enjoyed this visit to the gardens in March



Nothing like a summer picnic for having fun



Jan and Linda went to Jan's nieces beautiful wedding in March 2015



FOR THE FIRST TIME IN 20 ODD YEARS
WE MANAGED TO LOCATE JANICE'S TWO SISTERS
JULES AND KAREN - JANICE WAS OVER
THE MOON WITH JOY SEEING THEM AGAIN





Happy Birthday Bobbie
26 March 2015
lovely photo of you with Sister Margaret





Train adventures for Vicki, Jan and Anna on the train to the Chateau Tongariro in April





Lantern Festival April 2015



Lantern Festival April 2015

HAPPY BIRTHDAY ELISABETH May 2015





Andrea, Shelly and Janice enjoying a few days break







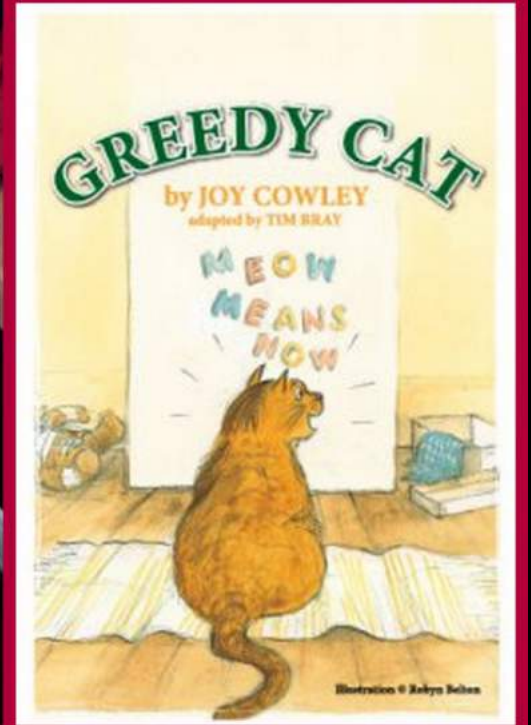
Fulton Hogan visits Brett at Ranfurly

*Visit from the Fire Service
15 July 2015*



15 July 2015





Gorgeous pictures taken at the Pump house Takapuna Auckland





JULY 2015
WAIKEKE ISLAND VISIT
Jan Horrocks sister's invitation









Out&About

Ranfurly Care ready to rock on stage



Performing group Mystic Beginnings. From left: Ghadha Al Oteabi, Anne Fitzpatrick, Janice Louise McKenzie, Charlotte Phi, Christie Ryan and Philippa Hall.

Ranfurly Care Society in Epsom is gearing up for a three-day extravaganza of art, theatre, dance, music and creativity. The group will perform and exhibit their work at InterAct 2015, held at Corbans Art Centre in Henderson from October 21 to 23. Visit ceac.org.nz for details.



Ian Miller and Filia Solomona show off their outfits.



Ranfurly Care performers Linda Robinson and Keyzia Marks.

PHOTOS: JULIAN RAETHEL



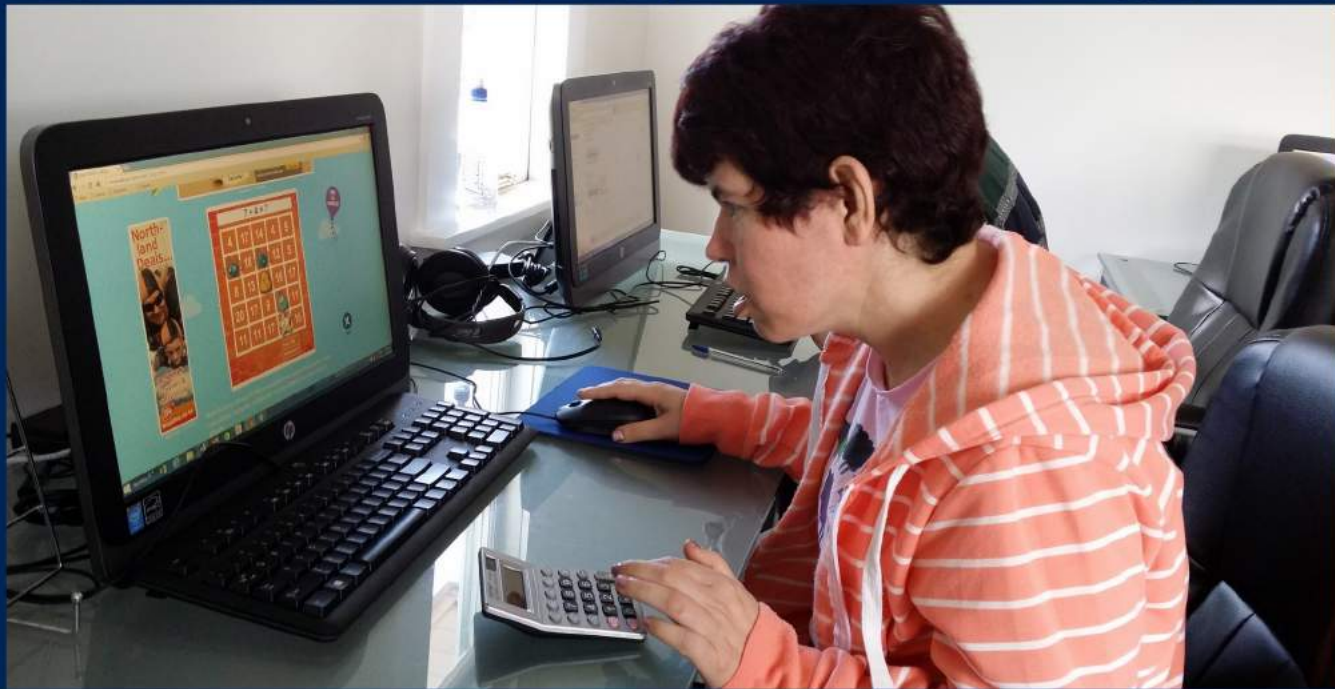
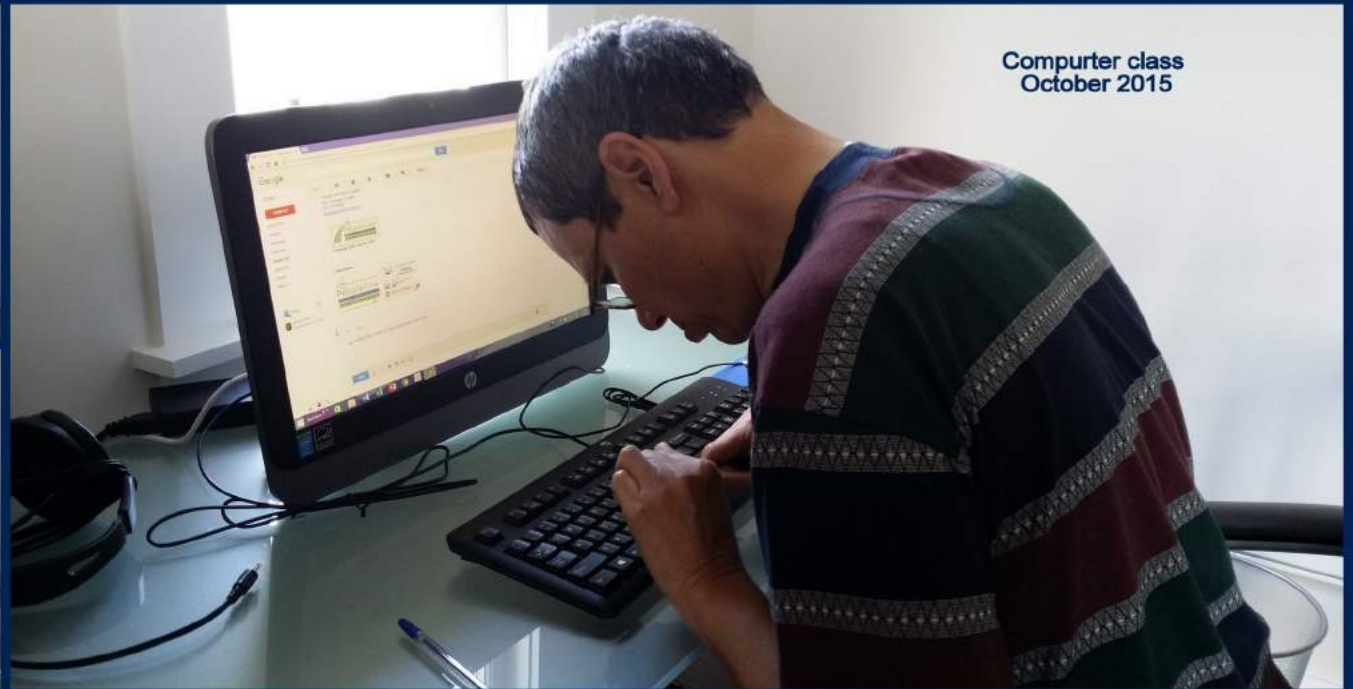
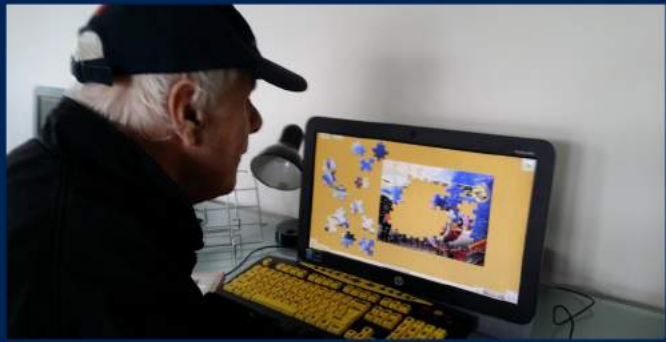
Creative art teachers Glynis Bielecki and Melissa Durbin.

Interact on the 20 and 21 October was a great success for our input with dance, Art and a recycle fashion parade.



Meeting Danyon Loader at West Wave







Congratulations to Christie for her Tournament Trophies



Ranfurly Creative Bloggers

The mosaic room and the art room have started their own blogs. Students will be learning how to create a blog and to post things to this. Keep a regular eye on these websites for the latest images and updates.

www.ranfurlyartroom.blogspot.com

www.ranfurlymosaicartists.blogspot.com



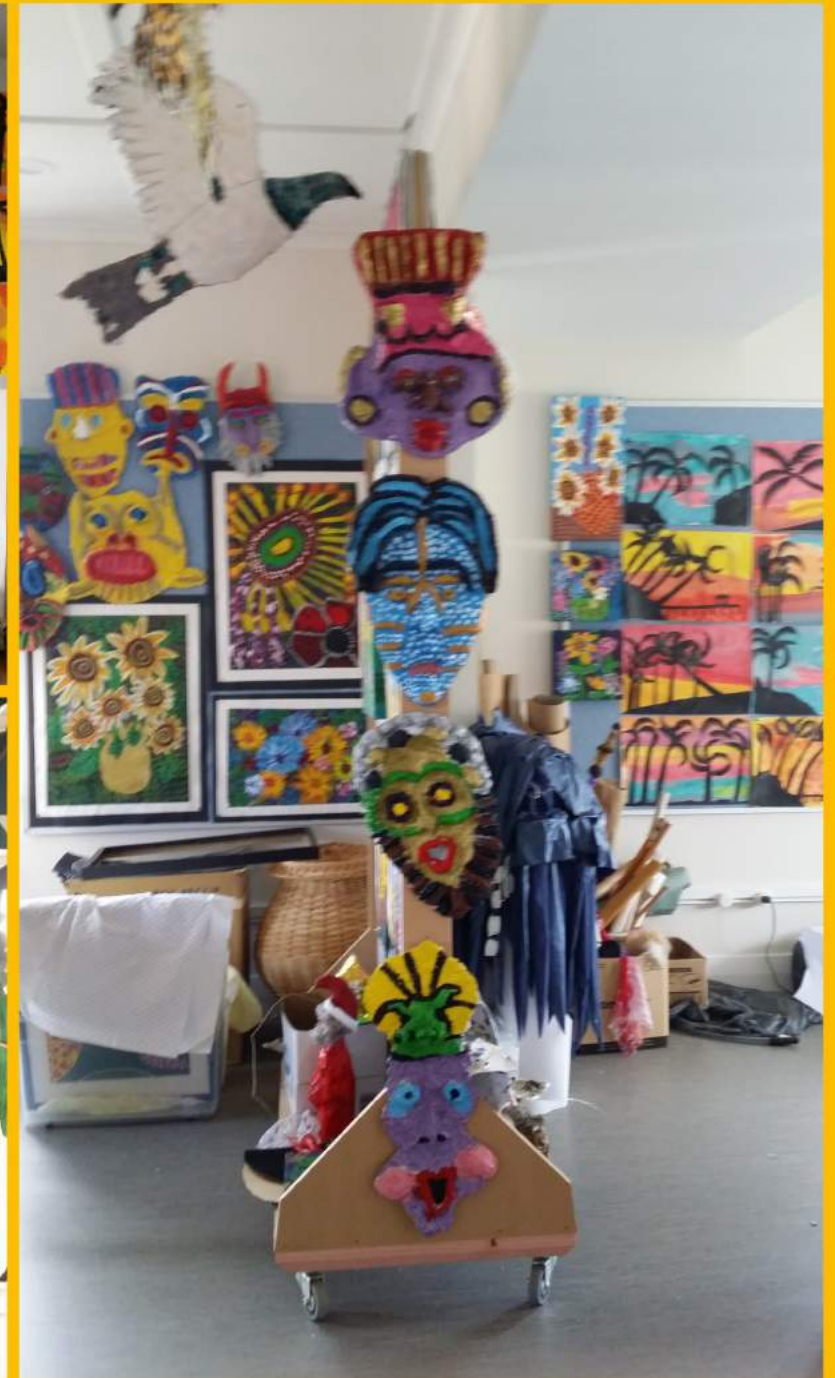


ART ROOM WIP Oct 2015



HIDE EVIT







The gardens looking pretty in the spring









November 2015
Crystal Mountain





CPA Flowers



The All Blacks arrive home from the World Cup



Bridies Birthday
September 2013





**Elvis in the Park
10th January 2016**

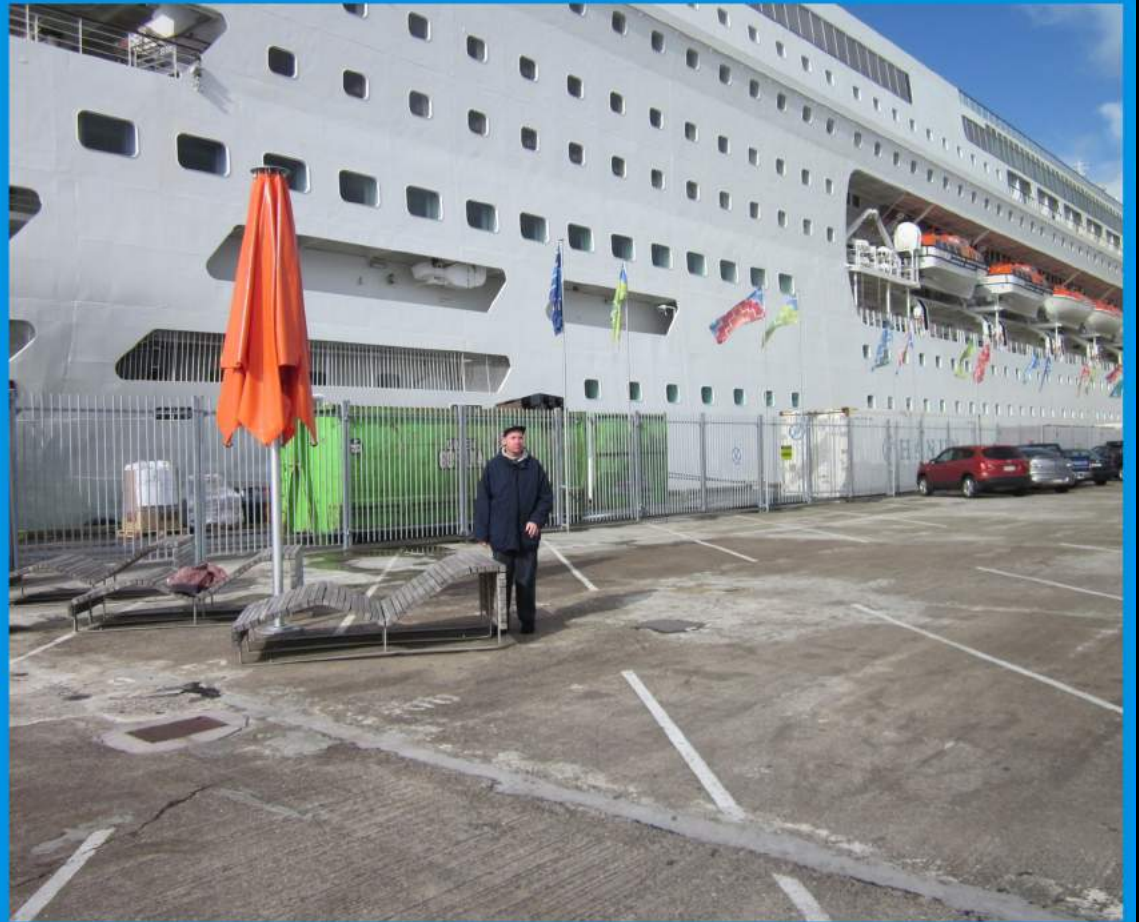


A selection of

Duncan House Holidays

in

2015























ARA MARAMA - THE ENLIGHTENED PATHWAY

www.ranfurlycare.co.nz